

# DOLCY TRANSMISSION LINE

Dolcy Solar Inc. which is a project specific entity owned by Westbridge Renewable Energy Corporation (Dolcy Solar Inc.) is proposing the development of a 240-kilovolt (kV) transmission line to connect the approved Dolcy Solar Project to the Alberta Interconnected Electric System (AIES). The proposed line would be located within the MD of Wainwright and the MD of Provost generally running between the approved Dolcy Solar Project and connecting to AltaLink Management Ltd.'s (AltaLink) 948L transmission line near AltaLink's existing Hansman Lake Substation. There are two potential connection points being considered, please see the enclosed map.

The transmission line will require approval from the Alberta Utilities Commission (AUC) through the issuance of a permit to construct and a license to operate. AUC approval will be based on compliance with Rule 007, which includes specific requirements for stakeholder engagement.

## **Does this project look familiar? Hasn't this line already been approved?**

The proposed transmission line by Dolcy Solar Inc. probably seems familiar because it follows the same route and uses the same structures as a previously approved transmission line developed by AltaLink. Dolcy Solar Inc. is aware that landowners and interested parties have previously provided feedback on this route. However, to develop this project we will need to complete a new application which includes stakeholder engagement, environmental assessments and land acquisition. The intent is to develop and apply for a very similar project would enable the Dolcy transmission line to meet its own need and the system need if the Alberta Electric System Operator decides to progress the remainder of its system development.

Dolcy Solar Inc. is now engaging with the community to discuss the same route, emphasizing that it is intended that the final approved route would result in only one transmission line being built. This overlap allows for streamlined infrastructure development, minimizing additional impacts on the land and to the community while re-engaging on the feedback and insights gathered during the previous approval process. Dolcy Solar Inc. is committed to thorough community engagement to ensure that all voices are heard, and that the final decision reflects the best interests of the region.

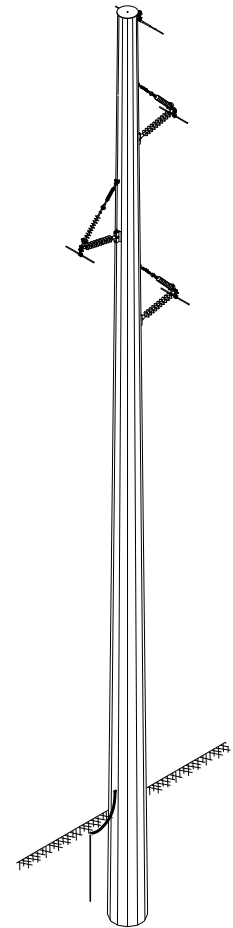
## What will the transmission line look like?

The transmission line will be mostly single-pole steel structures with some alternate structures used for highway crossings, larger spans, corners, or at the connection point with the existing substation. The typical span between single-pole steel structures is anticipated to be approximately 230 m (750 feet). While it is intended that the structures will be very similar to the AltaLink project, final structure types have not yet been determined and will be shared with the community once finalized. Feedback received from community members as well as engineering constraints will assist in determining where these structures will be placed.

## Typical Single-Pole Steel Structure

Approximate height  
**25 m to 35 m**

Approximate width  
**0.7 m**



## Who is the AESO?

The AESO is an independent, not-for-profit organization responsible for the safe, reliable and economic planning and operation of the provincial transmission grid. For more information about why this project is needed, please refer to the AESO's Need Overview included with this package or visit [www.aeso.ca](http://www.aeso.ca). If you have any questions or concerns about the need for this project or the proposed transmission development to meet the need you may contact the AESO directly. You can make your questions or concerns known to a transmission facility owner representative who will collect your personal information for the purpose of addressing your questions and/or concerns to the AESO. This process may include disclosure of your personal information to the AESO.

Alberta Electric System Operator (AESO)  
[stakeholder.relations@aeso.ca](mailto:stakeholder.relations@aeso.ca)  
1-888-866-2959  
[www.aeso.ca](http://www.aeso.ca)



## Who is Westbridge Renewable Energy Corporation?

Westbridge Renewable Energy Corp. is committed to creating top-quality large-scale solar PV projects. Its portfolio of projects can be found in Canada, the U.S. and UK, showcasing our dedication to clean and sustainable energy. At Westbridge, the focus is to develop innovative, renewable energy solutions that benefit both the environment and the communities they are developed in.



### How is the route determined?

The route determination process is specific to this project and reflects that the Alberta Utilities Commission previously assessed multiple alternatives in this area and approved a low impact route for the AltaLink project. This same route is being used as the option for this project and further evaluations will be conducted to determine if this is the right option. These evaluations will include public feedback, environmental evaluations, engineering design, cost estimates and planning requirements. Once these evaluations are complete, Dolcy Solar Inc. will again provide notice to all landowners and interested parties that an application will be made to the AUC with the route or where modifications have been made.

### Who will operate the final transmission line?

This Project is being developed under the AESO's Market Participant Choice (MPC) process, which means the Project will be permitted and constructed by Dolcy Solar Inc. and at Dolcy Solar Inc.'s expense. Once commissioned, Dolcy Solar Inc. will transfer the Project to AltaLink who will assume the role of Transmission Facility Owner (TFO) and operator of the transmission line.

### Who will approve the project?

The AUC will be the final decision maker on the project. The AUC is an independent, quasi-judicial agency of the province of Alberta. The AUC is responsible to ensure that the delivery of Alberta's utility service takes place in a manner that is fair, responsible and in the public interest. Dolcy Solar Inc. expects to submit a Facility Application for the Project in early 2025 that will begin the regulatory review process. For more information on the AUC, please visit [www.auc.ab.ca](http://www.auc.ab.ca).



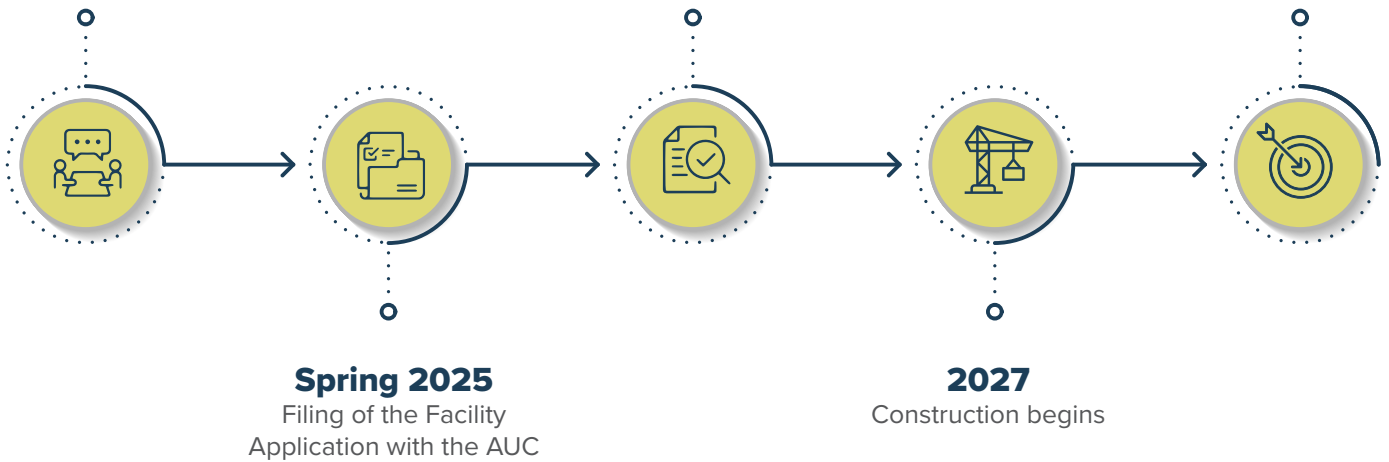
## Timelines

The following timelines are expected for the development of the new transmission line (subject to change)

Project introduction  
and engagement begin  
**December 2024**

Regulatory  
review process  
**2025**


Transmission line  
is in-service  
**2028**



## Questions?

We'd really appreciate hearing from you. Please give us a call or send us an email.

 [dolcytransmission@maskwaenv.com](mailto:dolcytransmission@maskwaenv.com)

 1-888-893-7189

 [www.dolcysolar.com](http://www.dolcysolar.com)