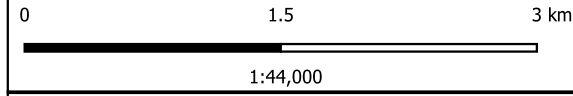
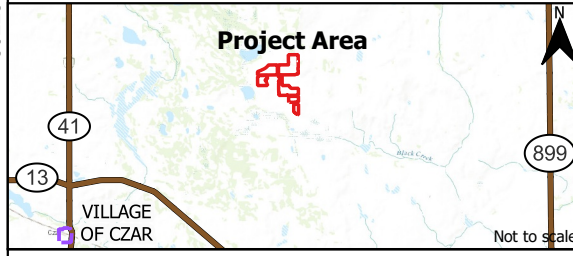


Dolcy Solar Project Glare Impact Map

- Legend**
- Project Area
 - Consultation Area (400m Radius)
 - Notification Area (800m Radius)
 - Transportation Route Assessed
 - Road

Notes: No railways are located within 800m and no aerodromes are located within 4,000m and as such, have not been included in the assessment.











Coordinate System: EPSG:32612 - NAD84 / UTM zone 12N
 Data Credits: Dolcy Solar Inc., Green Cat Renewables Canada Corp., AltaLIS, ESRI

Client: Dolcy Solar Inc.

Drawing by: Green Cat Renewables Canada Corp.
 Doc Number: Dolcy_GlareImpactMap
 Version: 2.0
 Author: LE
 Checked by: JS
 Approved by: JM
 Date: 2023-9-29



Glare Receptors		Glare Intensity		Max Minutes/Day**	
	Passenger/Truck/Bus/Commercial*		No Glare		0 min/day
	Residence		Green Glare		12-17 min/day
			Yellow Glare		76-89 min/day

*Assesed as routes (not point locations).
 ** ±15° field of view for the ground based transportation routes. Glare does not necessarily occur every day of the year. The max minutes/day accounts for both green and yellow glare.